

Crystal Farm

BY LAUNDRY BASKET QUILTS



Berry Patch
Quilt Design:
Edyta Sitar
Quilt Size: **34" x 34"**
andoverfabrics.com

andover

makower uk
The Henley Studio

Free Pattern Download Available

1384 Broadway New York, NY 10018
Tel. (800) 223-5678 • andoverfabrics.com

Berry Patch



Featuring Andover Fabrics new Collection: Crystal Farm by Laundry Basket Quilts

Quilt designed by Edyta Sitar

Quilt finished 34" x 34"

Berry Patch is a great way for applique lovers to create a striking, easy project using Edyta's pre-cut applique shapes!

Cutting Directions

Note: Read assembly directions before cutting patches. Borders are cut to exact length required plus ¼" seam allowance. WOF designates the width of fabric from selvedge to selvedge (approximately 42" wide).

Fabric A Cut (1) 6 ½" x WOF strips. Sub-cut the strips into (4) 6 ½" squares and (4) 2 ½" squares.
See instructions to cut (2) large leaves.*
See instructions to cut (4) small leaves.*

Fabric B Cut (3) 6 ½" x WOF strips. Sub-cut (13) 6 ½" squares and (6) 2 ½" squares.
Cut (1) 9 ¾" x WOF strip. Sub-cut (3) 9 ¾" squares. Cut the squares across both diagonals to make (12) side setting triangles.
Cut (1) 5 ½" x WOF strip. Sub-cut (2) 5 ½" squares. Cut the squares across (1) diagonal to make (4) corner setting triangles.

Fabric C Cut (1) 2 ½" x WOF strip. Sub-cut the strip into (3) 2 ½" squares.
See instructions to cut (8) small leaves.*

Fabric D Cut (1) 2 ½" x WOF strip. Sub-cut the strip into (8) 2 ½" squares.
See instructions to cut (8) small leaves.*

Fabric E Cut (1) 2 ½" x WOF strip. Sub-cut the strip into (4) 2 ½" squares.
See instructions to cut (4) small leaves.*

Fabric F Cut (1) 2 ½" x WOF strip. Sub-cut the strip into (3) 2 ½" squares.

Fabric G Cut (1) 2 ½" x WOF strip. Sub-cut the strip into (7) 2 ½" squares.
See instructions to cut (4) small leaves.*

Fabric Requirements

		Yardage	Fabric
Fabric A	blocks, leaves	¼ yard	8614-T
Fabric B	background	1 ½ yards	8625-L
Fabric C	blocks, leaves	⅛ yard	8619-T
Fabric D	blocks, leaves	⅛ yard	8620-T
Fabric E	blocks, leaves	⅛ yard	8616-T
Fabric F	blocks	⅛ yard	8625-T
Fabric G	blocks, leaves	⅛ yard	8627-T
Fabric H	blocks, leaves	⅛ yard	8623-T
Fabric I	blocks, leaves	⅛ yard	8621-T
Fabric J	blocks	⅛ yard	8627-L
Fabric K	blocks	⅛ yard	8622-L
Fabric L	blocks	⅛ yard	8619-L
Fabric M	flowers, stems	¼ yard	8614-N
Fabric N	flowers	⅛ yard	8617-R
Fabric O	flowers	⅛ yard	8616-Y
Fabric P	leaves	⅛ yard	8624-Y
Fabric Q	flowers	⅛ yard	8624-E
Fabric R	leaves	⅛ yard	8619-Y
Fabric S	flowers, binding	¾ yard	8616-R
Fabric T	flowers	⅛ yard	8614-R
Fabric U	leaves	⅛ yard	8617-Y
Backing		1 ¼ yards	8614-L

Items needed:

Crystal Farms Silhouettes Fusible Applique
Shapes- LBQ-0647-S6

or

Crystal Farms Snippets Non-Fusible Applique
Shapes-LBQ-0656-A6

Available for purchase at your local quilt shop or at
www.Laundrybasketquilts.com

Fabric H Cut (1) 2 ½" x WOF strip. Sub-cut the strip into (1) 2 ½" square.
See instructions to cut (1) large leaf and (3) mini leaves.*

Fabric I Cut (1) 2 ½" x WOF strip. Sub-cut the strip into (2) 2 ½" squares.
See instructions to cut (1) large leaf and (4) small leaves.*

Berry Patch

Cutting Directions - Continued

- Fabric J** Cut (1) 2 1/2" x WOF strip. Sub-cut the strip into (10) 2 1/2" square.
- Fabric K** Cut (1) 2 1/2" x WOF strip. Sub-cut the strip into (13) 2 1/2" square.
- Fabric L** Cut (1) 2 1/2" x WOF strip. Sub-cut the strip into (11) 2 1/2" square.
- Fabric M** See instructions to cut (8) bias vines and (4) outer flowers.*
- Fabric N** See instructions to cut (1) large flower.*
- Fabric O** See instructions to cut (4) small flowers.*
- Fabric P** See instructions to cut (3) mini leaves.*
- Fabric Q** See instructions to cut (1) large flowers.*
- Fabric R** See instructions to cut (1) mini leaf.*
- Fabric S** See instructions to cut (1) large flower.*
Cut (4) 2 1/2" x WOF strips for the binding.
- Fabric T** See instructions to cut (1) large flower.*
- Fabric U** See instructions to cut (1) mini leaf.*
- Backing** Cut (1) 42" x 42" strip for the back.

* *Optional if you do not have Silhouettes or Snippets sets*

Making the Quilt

1. Block Assembly

Sew (1) 2 1/2" Fabric J square to the left side of (1) 2 1/2" Fabric C square. Sew (1) 2 1/2" Fabric K square to the right side of the Fabric C square to make the top row (Diagram 1).

2. Sew (1) 2 1/2" Fabric C square to the left side of (1) 2 1/2" Fabric B square. Sew (1) 2 1/2" Fabric D square to the right side of the Fabric B square to make the middle row (Diagram 1).

3. Sew (1) 2 1/2" Fabric K square to the left side of (1) 2 1/2" Fabric E square. Sew (1) 2 1/2" Fabric L square to the right side of the Fabric E square to make the bottom row (Diagram 1).

4. Sew the (3) rows together to make (1) Block One square (Diagram 1).

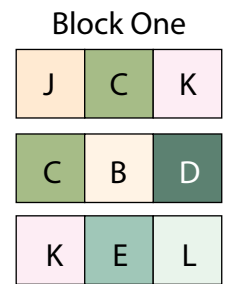


Diagram 1

5. Repeat Steps 1-4 and use Diagrams 2 through 8 for fabric identification and location to make one of each block, Block Two through Block Eight.

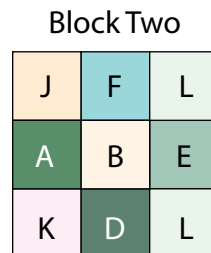


Diagram 2

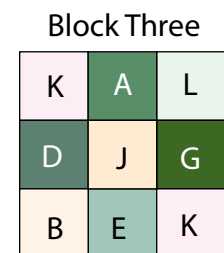


Diagram 3

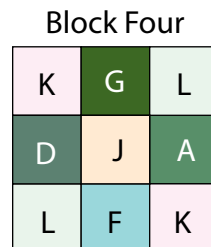


Diagram 4

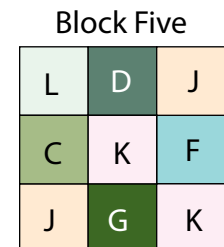


Diagram 5

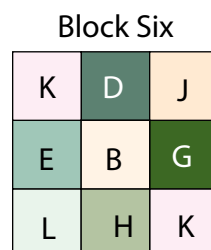


Diagram 6

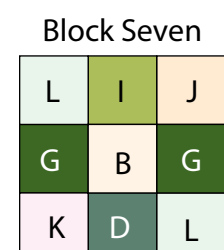


Diagram 7

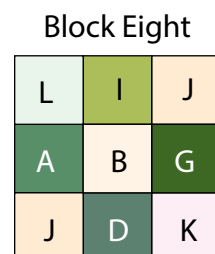


Diagram 8

Berry Patch

Quilt Top Assembly

(Refer to the Quilt Layout when assembling the quilt top.)

6. Refer to Diagram 9 and sew (1) Fabric B side setting triangle to opposite sides of (1) 6 ½" Fabric B square. Sew (1) Fabric B corner setting triangle to the top of the Fabric B square to make Row One.
7. Sew (1) 6 ½" Fabric B square to each side of (1) Block One square. Sew (1) Fabric B side setting triangle to each end of the strip to make Row Two.
8. Sew (1) Block Two square to the left side of (1) 6 ½" Fabric A square. Sew (1) Block Three square to the right side of the Fabric A square. Sew (1) 6 ½" Fabric B square to each end of the new strip. Sew (1) Fabric B side setting triangle to each end of the new strip to make Row Three.
9. Sew (1) Fabric B corner setting triangle, (1) 6 ½" Fabric B square, (1) Block Four square, (1) 6 ½" Fabric A square, (1) 6 ½" Fabric B square, (1) 6 ½" Fabric A square, (1) Block Five square, (1) 6 ½" Fabric B square and (1) Fabric B corner setting triangle together, in that order, to make Row Four.
10. Sew (1) Block Six square to the left side of (1) 6 ½" Fabric A square. Sew (1) Block Seven square to the right side of the Fabric A square. Sew (1) 6 ½" Fabric B square to each end of the new strip. Sew (1) Fabric B side setting triangle to each end of the new strip to make Row Five.
11. Sew (1) 6 ½" Fabric B square to each side of (1) Block Eight square. Sew (1) Fabric B side setting triangle to each end of the strip to make Row Six.
12. Sew (1) Fabric B side setting triangle to opposite sides of (1) 6 ½" Fabric B square. Sew (1) Fabric B corner setting triangle to the bottom of the Fabric B square to make Row Seven.
13. Sew the (7) rows together, in numerical order, to make the quilt top.

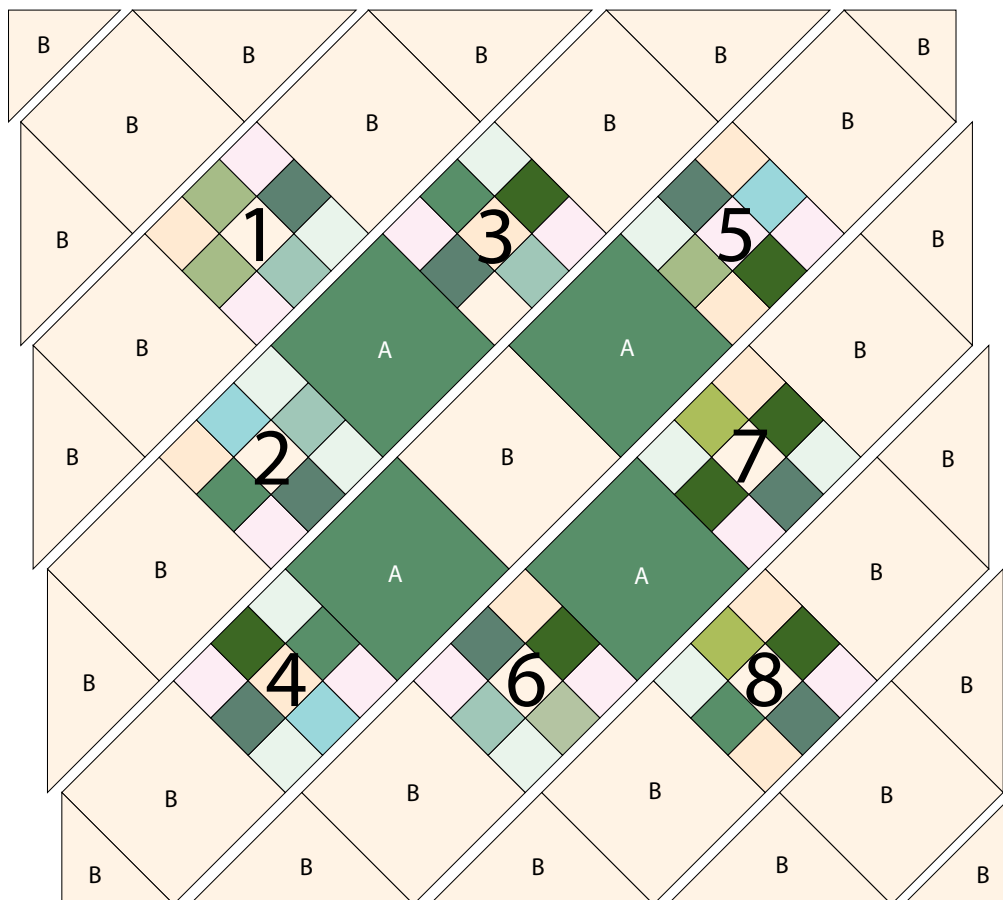


Diagram 9

Berry Patch

- 14.** Follow the instructions on your Silhouettes Fusible Applique Shapes-Crystal Farms or Snippets Applique Shapes-Crystal Farms to applique the shapes onto the quilt top.

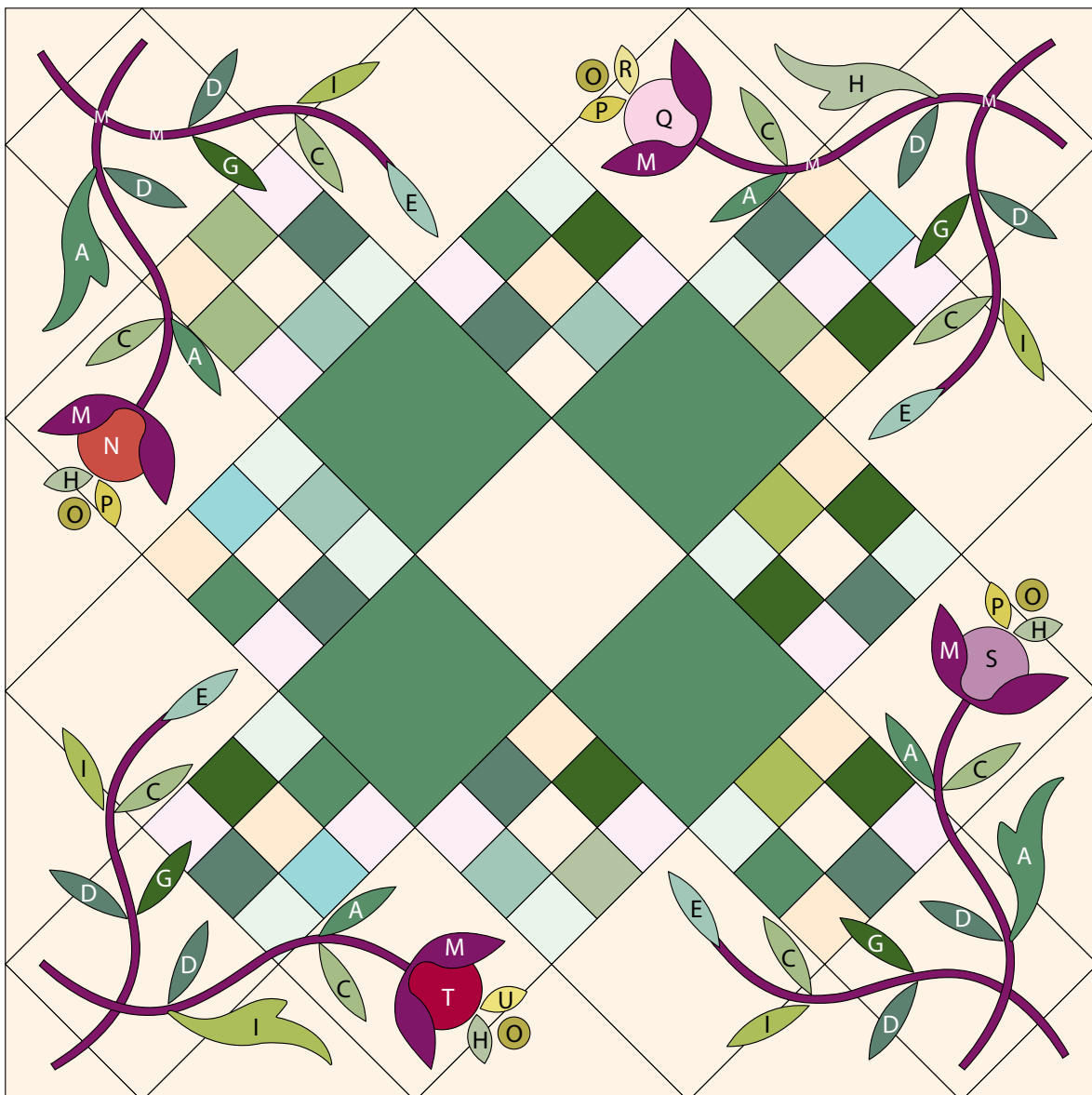
OPTIONAL: Following the manufacturer's instructions, trace the listed number of each template onto the paper side of the fusible web. Roughly cut out each template about 1/8" outside the drawn lines.

- 15.** Press each template onto the wrong side of the fabrics as listed on the templates. Cut out each template on the drawn lines.

- 16.** Refer to the quilt layout to arrange and press the bias vines, leaves and flowers to the quilt top.
- 17.** Finish the raw edges of each shape with a decorative stitch such as a buttonhole or satin stitch to finish the quilt top.

Finishing the Quilt

- 18.** Layer and quilt as desired.
- 19.** Sew the (4) Fabric S binding strips together, end to end with a 45-degree seams, to make the binding. Fold this long strip in half lengthwise with wrong sides together and press.
- 20.** Bind as desired.



Quilt Layout

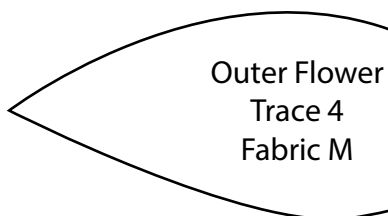
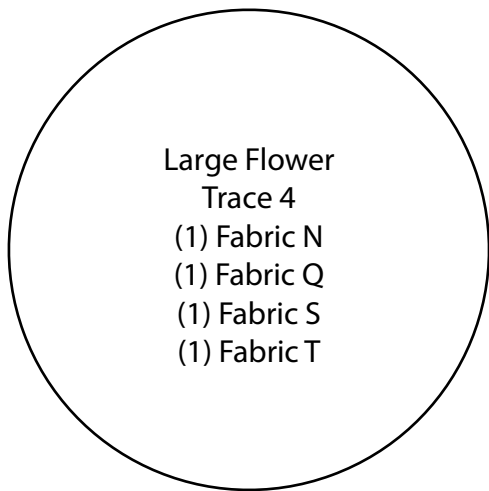
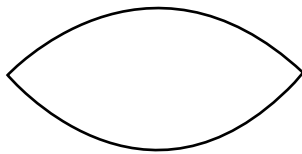
Berry Patch

Templates: Reversed for Fusible Applique

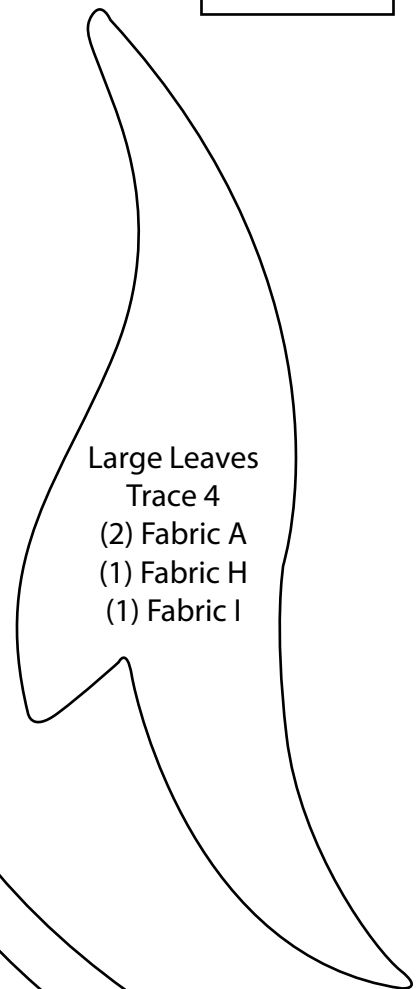
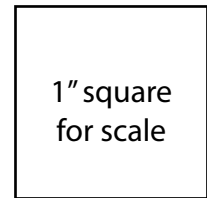
Vine
Trace 8
Fabric M



Mini Leaves
Trace 8
(3) Fabric H
(3) Fabric P
(1) Fabric R
(1) Fabric U



Small Leaves
Trace 32
(4) Fabric A
(8) Fabric C
(8) Fabric D
(4) Fabric E
(4) Fabric G
(4) Fabric I



Crystal Farm

BY LAUNDRY BASKET QUILTS



8614-L 2 1/2 yds
(includes backing)



8614-N 1/4 yd



8614-R 1/8 yd



8614-T 1/4 yd



8615-L



8615-N



8616-R 3/8 yd
(includes binding)



8616-T 1/8 yd



8616-Y 1/8 yd



8617-R 1/8 yd



8617-Y 1/8 yd



8618-E



8619-L 1/8 yd



8619-R



8619-T 1/8 yd



8619-Y 1/8 yd



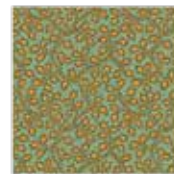
8620-N



8620-T 1/8 yd



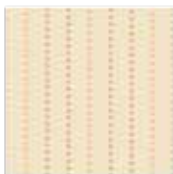
8621-L



8621-T 1/8 yd



8622-E



8622-L 1/8 yd



8623-E



8623-T 1/8 yd



8624-E 1/8 yd



8624-Y 1/8 yd



8625-L 1 1/8 yds



8625-T 1/8 yd



8626-E



8626-L



8627-L 1/8 yd



8627-T 1/8 yd

About Our Fabrics

A recognized leader in the quilting industry, Andover Fabrics features designs by a wide variety of talented artists and licenses, including Downton Abbey and Eric Carle's Very Hungry Caterpillar. Catering to the tastes of creative and dedicated quilters, Andover has a style for everyone — authentic reproductions, romantic florals, modern and more.

Fabrics shown are 25% of actual size.

andover

•
•
•
•
•
makower uk
The Henley Studio

Free Pattern Download Available

1384 Broadway New York, NY 10018
Tel. (800) 223-5678 • andoverfabrics.com